



Volvo Construction Equipment

# EW60E

Volvo Excavators 5.15-6.07 t / 11,355-13,380 lb 63.4 hp



# Space and comfort to work

The EW60E features an innovative cab design for a comfortable and more productive operator environment. Well-designed ergonomics and a modern LCD display give you perfect control in all operations. Plenty of storage space is available for personal belongings.

## Operator convenience

Ample storage space is available for operator comfort and convenience. A phone tray, two power sockets, cup holder and three other large storage areas makes the Volvo cab a more convenient working environment.



## Operator visibility

All-round visibility is enhanced by thin pillars, large glazed area and a large wiper blade. The rear view camera secures a better view for perfect and safe control through the 7" color LCD display. This ensures there are no blind spots even in the most confined working areas.



## Work in comfort

The comfortable and adjustable seat makes it easier for the operator to work hard all day and feel less tired by the end of it. The cab's air conditioning is efficient and in automatic mode, the temperature remains at a set level. Six adjustable vents allow for optimal airflow in the cab.



## Ease of control

Control your machine with minimal effort in order to get more done in less time. The keypad groups all controls on the right hand side and the 7" color LCD screen displays all machine information for access to functions through its easy to use menus. Through the hot keys, the operator can directly access pre-set functions for added convenience. The proportional joystick provides excellent grip, and the roller fits your thumb perfectly for easy and precise control.







# LARGER CAB

A comfortable working space results in better operation, increasing production and reducing fatigue. The cab design creates space behind the seat, allowing the operator to move more freely. The new generation Volvo Cab features excellent visibility and reduced noise levels.



# BOOSTED PERFORMANCE

Do more in less time with outstanding combined digging efforts, powerful travel force, fluid swing force and optimal lifting capacity. The EW60E has been designed to tackle the most challenging job sites thanks to the powerful Volvo Tier 4 final engine and adjustable hydraulic flow. Its well-balanced driveline delivers optimum performance whether working on the job site or on the move.



# Power for performance

Climb quick, swing smooth, dig hard and load fast with the EW60E. The traction, swing force and lifting capacity gets you results, fast. This versatile and powerful machine can be tailored for any job and is suitable for a wide range of applications.

## Powerful Volvo Tier 4 final engine

Give your job site a boost and achieve fast results. Great power and effective cooling ensure optimized performance in any climate. For the ultimate combination of power and performance, the Tier 4 final engine helps to push through challenging conditions.



## Smooth operation

Smooth combined operations means you can make accurate and precise movements. With responsive controls the machine does exactly what the operator intends for less fatigue and fluent movement.



## Versatility

Perform on any job site, whether you're working in a confined space or major construction area. The machine's compact design, long arm, offset boom, dozer blade, auxiliary hydraulic and thumb piping make the EW60E the best choice for a wide range of jobs and applications.



## Wheeled performance

A top speed up to 18 mi/h (30 km/h) and the four wheel drive allow you to go on and off-road for maximum mobility. Drive the machine easily between locations and access hard to reach job sites to save time and keep your machine in prime condition.



# Profit in your business

The EW60E is designed and built to increase your profitability and keep you working longer. To reduce your running costs it features excellent service access, convenient maintenance points and Volvo's auto engine shutdown feature. With outstanding fuel efficiency this durable and reliable machine secures your costs and increases your uptime.

## Low fuel consumption

The Volvo engine and hydraulics combine to offer superior fuel efficiency. The standard auto idle feature helps to reduce your fuel consumption even further and increase your profits.



## Auto engine shutdown

A unique optional feature from Volvo, the engine shuts off automatically after a preselected idle time, lowering fuel costs and noise. A stopped hour meter reduces maintenance costs and increases the resale value of the machine.



## MATRIS and VCADS Pro

By working with your dealer and using Volvo MATRIS software you can analyze operator behavior to improve efficiency, boost productivity and reduce your fuel and maintenance costs. Volvo also offers the VCADS Pro diagnostic system, making it easy to control your machine.



## Durability and reliability

The EW60E is designed with the same high quality as all Volvo machines, including robust transmission system and axles, so you can be assured it's durable and reliable on your job site. You can depend on your machine to perform and work hard for peace of mind.







# SERVICEABILITY

Keep your machine up and running with a number of features combined to increase machine availability and reduce downtime. Ground level service access, including great access to the main control valve, convenient greasing points, a large tool box in the lower structure and an easy to clean cooling unit all reduce service time and maintenance costs. Check service intervals easily through the 7" in-cab monitor, which displays reminders when maintenance is needed.





# ATTACHMENTS VERSATILITY

The machine's attachment can be easily changed to save time and costs. Its design, hydraulics, piping and in-cab controls combined with Volvo's attachments range allows the EW60E to take on a variety of tasks. Volvo attachments work in harmony with the machine to deliver maximum productivity.



# One machine, many job sites

Volvo offers a wide range of durable attachments that are suitable for any job site, including utilities, building, agriculture, landscaping and forestry. Volvo attachments are an integrated part of the excavator for which they're intended – delivering maximum productivity and versatility.

## Quick coupler

Both the mechanical and the hydraulic quick couplers allow a complete range of buckets to be changed quickly and efficiently.



## Buckets

A complete range of buckets from general purpose reinforced buckets to ditching buckets, allow the EW60E to work on many job sites for a wide range of applications. The durable buckets are built to work in loose gravel, crushed rock, dirt and soil.



## Breaker

Volvo's durable hydraulic breakers have been designed for ultimate compatibility with Volvo excavators. The wide range of breaker tools (or bits) has been built to break all kinds of materials and combines excellent performance with low noise and vibration levels.



## Thumb

Designed to work with both Volvo direct fit buckets and Volvo quick coupler, the Volvo thumb makes handling material easy for tasks including piling, placing, loading, lifting and carrying.



# A compact machine with big potential

## BOOSTED PERFORMANCE

Do more in less time with outstanding combined digging efforts, high driveline torque, fluid swing force and optimal lifting capacity.

### Smooth operation

Smooth combined operations enables you to make very accurate and precise movements.

### MATRIS and VCADS Pro

Volvo MATRIS analyses operator behavior, improving efficiency and productivity. VCADS Pro helps to control your machine.

## ATTACHMENTS VERSATILITY

The Volvo attachments range allows the machine to take on a variety of tasks for a wide range of jobs and applications.

### Powerful Volvo Tier 4 final engine

For the ultimate combination of power and performance, the engine helps power through challenging conditions.

### Auto engine shutdown

The auto engine shutdown provides lower fuel costs, less noise, much lower maintenance costs and a greater resale value.





## LARGER CAB

A comfortable working space results in an efficient operation, increasing production and reducing fatigue.

## Ease of control

The keypad groups all controls on the right hand side and the easy-to-read LCD screen displays all machine information for access to functions.

## Operator convenience

Ample storage space in the cab provides operator comfort and convenience.

## SERVICEABILITY

Ground level service access, including great access to the main control valve, convenient greasing points and easy to clean side-by-side coolers reduce service time.

## Wheeled performance

A top speed up to 18.6 mi/h (30 km/h) and the four wheel drive allow you to go on and off-road for optimal mobility.

## CUSTOMER SUPPORT AGREEMENTS

Customer Support Agreements offer preventive maintenance, total repairs and a number of uptime services.



# Adding value to your business

Being a Volvo customer means having a complete set of services at your fingertips. Volvo can offer you a long-term partnership, protect your revenue and provide a full range of customer solutions using high quality parts, delivered by passionate people. Volvo is committed to increasing the positive return on your investment and maximizing uptime.

## Complete Solutions

Volvo has the right solution for you. So why not let us provide all your needs throughout the whole life cycle of your machine? By listening to your requirements, we can reduce your total cost of ownership and increase your revenue.



## Genuine Volvo Parts

Our attention to detail is what makes us stand out. This proven concept acts as a solid investment in your machine's future. Parts are extensively tested and approved because every part is vital for uptime and performance. Only by using Genuine Volvo Parts, can you be sure that your machine retains the renowned Volvo quality.

## Service Network

In order to respond to your needs faster, a Volvo expert is on their way to your job site from one of our Volvo facilities. With our extensive infrastructure of technicians, workshops and dealers, Volvo has a comprehensive network to fully support you using local knowledge and global experience.







# CUSTOMER SUPPORT AGREEMENTS

The range of Customer Support Agreements offer preventive maintenance, total repairs and a number of uptime services. Volvo uses the latest technology to monitor machine operation and status, giving you advice to increase your profitability. By having a Customer Support Agreement you are in control of your service costs.

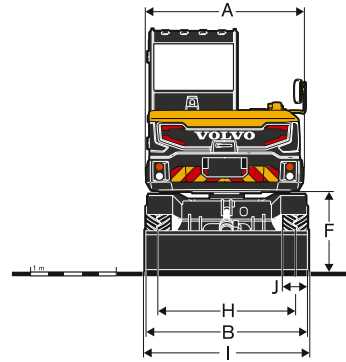
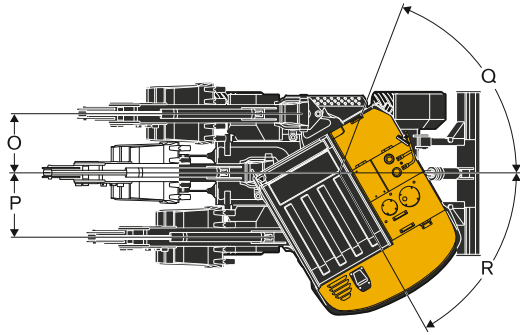
# Volvo EW60E in detail

<b>Engine</b>		
The new engine which provides excellent performance is equipped with a four-cylinder, vertical, electronic controlled high pressure fuel injectors, in-line turbo charger water cooled diesel engine. This engine fully meets the demands of the latest Tier 4f (Stage IIIB) emissions regulations.		
Engine	Volvo	D2.6H
Max. power at	r/min (r/s)	2,400 (40)
Net (ISO9249/SAEJ1349)	kW (hp)	45.2 (60.6)
Gross (ISO 14396/SAE J1995)	kW (hp)	47.3 (63.4)
Max. torque	Nm (ft lbf)	222 (163)
at engine speed	r/min (r/s)	1,500 (25)
No. of cylinders		4
Displacement	l (in <sup>3</sup> )	2.6 (160)
Bore	mm (in)	87 (3.4)
Stroke	mm (in)	110 (4.3)
<b>Electrical system</b>		
Voltage	V	12
Batteries	V	1 x 12
Battery capacity	Ah	100
Alternator	V/Ah	12/90
Start motor	V - kW	12 - 2.5
<b>Undercarriage</b>		
Drive train: One single variable axial-piston motor mounted to the two-step, Power Shift gearbox gives power to front and rear axles. Framework: All-welded robust torsion box frame. Front axle: Robust excavator axle with automatic or operator controlled front axle oscillation lock.		
Oscillating	± °	5
with mudguards	± °	5
Tire	type	12-16.5 12PR
Tractive force (net)	kN (lbf)	29 (6,519)
Travel speed, on road	km/h (mi/h)	30 (18.6)
Travel speed, off road	km/h (mi/h)	20 (12)
Travel speed, creep	km/h (mi/h)	10 (6.2)
Min. turning radius	m (ft)	5.1 (16.7)
Travel speeds may depend on to local regulations		
<b>Brake system</b>		
Service brakes: servo-hydraulically actuated self-adjusting wet multi-discs. Parking brake: negative wet disc in gear housing, spring applied and pressure released. Digging brake: service brake with mechanical lock system.		
<b>Swing system</b>		
The swing system is feed from the hydraulic system, eliminating the need for any additional maintenance to gear oil replenishing. Built-in parking brake: Parking brake is built into the hydraulic motor, enabling safer parking on an incline. Shockless function: Pressure relive valves are fitted into the swing circuit to eliminate shocks for smooth operation when changing direction.		
Max. slew speed	r/min	10
Max. slew torque	kNm (ft lbf)	11.6 (8,556)
<b>Sound Level</b>		
Sound level in cab according to ISO 6396		
LpA	dB(A)	78
External sound level according to ISO 6395 and EU Noise Directive 2000/14/EC		
LwA	dB(A)	97

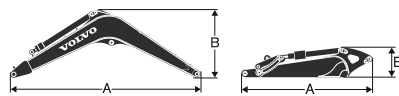
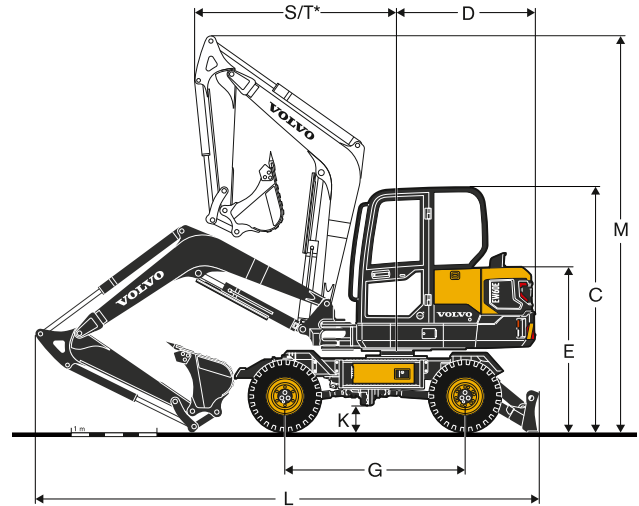
<b>Hydraulic system</b>		
Open-center, negative hydraulic system providing accurate controllability. The following working modes are included in the system: Parking mode (P): Parking position for optimal safety. Travel mode (T): Engine speed is controlled by travel pedal stroke and mode selection switch for low fuel consumption and noise. Work equipment are not able to move at this mode for optimal safety. Working mode (W): Full working flow with adjustable engine rpm for normal working and best speed utilisation.		
Main pump (Type: Variable-displacement pump)		
Max. flow	l/min (gal/min)	2 x 60 (2 x 15.9)
Pilot pump (Type: Gear pump)		
Max. flow	l/min (gal/min)	1 x 21.4 (1 x 5.7)
Swing + steering pump (Type: Low noise gear pump)		
Max. flow	l/min (gal/min)	1 x 38.9 (1 x 10.3)
Relief valve setting pressure		
Implement	MPa (psi)	23 (3,263)
Travel system	MPa (psi)	23 (3,263)
Slew system	MPa (psi)	19 (2,698)
Pilot system	MPa (psi)	3.1 (454)
<b>Hydraulic Cylinders</b>		
Boom		1
Bore x Stroke	ø x mm (ø x in)	110 x 707 (4.3 x 27.8)
Arm		1
Bore x Stroke	ø x mm (ø x in)	90 x 813 (3.5 x 32)
Bucket		1
Bore x Stroke	ø x mm (ø x in)	80 x 660 (3.1 x 26)
Dozer blade		1
Bore x Stroke	ø x mm (ø x in)	105 x 230 (4.1 x 9.1)
Boom swing		1
Bore x Stroke	ø x mm (ø x in)	90 x 570 (3.5 x 22.4)
<b>Service Refill</b>		
Fuel tank	l (gal)	110 (29.1)
Hydraulic system, total	l (gal)	120 (31.7)
Hydraulic tank	l (gal)	76 (20.1)
Engine oil	l (gal)	11 (2.9)
Engine coolant	l (gal)	10 (2.6)
Transmission	l (gal)	1.7 (0.4)
Axle differential:		
Front axle	l (gal)	6.3 (1.7)
Rear axle	l (gal)	8 (2.1)
<b>Total Machine Weights</b>		
Machine with 2.9 m / 9' 6" boom, 1.6 m / 5' 3" arm, 0.142 m <sup>3</sup> / 37.5 gal bucket, standard counterweight, dozer blade, without quick coupler and 75 kg operator weight		
With dozer blade	kg (lb)	5 880 (12,970)



# Specifications



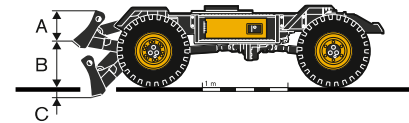
DIMENSIONS		Unit		EW60E	
<b>Boom</b>		<b>m</b>	<b>ft in</b>	<b>2.9</b>	<b>9' 6"</b>
<b>Arm</b>		<b>m</b>	<b>ft in</b>	<b>1.6</b>	<b>5' 3"</b>
A	Overall width of upper structure	mm	ft in	1 845	6' 1"
B	Overall width	mm	ft in	1 930	6' 4"
C	Overall height of cab	mm	ft in	2 855	9' 4"
D	Tail swing radius	mm	ft in	1 650	5' 5"
E	Overall height of engine hood	mm	ft in	1 901	6' 3"
F	Counterweight clearance	mm	ft in	960	3' 2"
G	Wheel base	mm	ft in	2 100	6' 11"
H	Tread width	mm	ft in	1 595	5' 3"
I	Dozer blade width	mm	ft in	1 930	6' 4"
J	Tire width	mm	ft in	305	1' 0"
K	Min. ground clearance	mm	ft in	295	1' 0"
L	Overall length	mm	ft in	5 869	19' 3"
M	Overall height of boom raise	mm	ft in	4 599	15' 1"
S	Front swing radius	mm	ft in	2 352	7' 9"
T*	Front swing radius(Max. offset)	mm	ft in	1 386	4' 7"
O	Boom swing distance	mm	ft in	756	2' 6"
P	Boom swing distance	mm	ft in	863	2' 10"
Q	Boom swing angle	°		70	
R	Boom swing angle	°		60	



DIMENSIONS		Unit		Boom		Arm	
		<b>m</b>	<b>ft in</b>	<b>2.9</b>	<b>9' 6"</b>	<b>1.6</b>	<b>5' 3"</b>
A	Length	mm	ft in	3 008	9' 10"	2 102	6' 11"
B	Height	mm	ft in	1 159	3' 10"	488	1' 7"
	Width	mm	ft in	336	1' 1"	300	1' 0"
	Weight	kg	lb	349	770	206	450

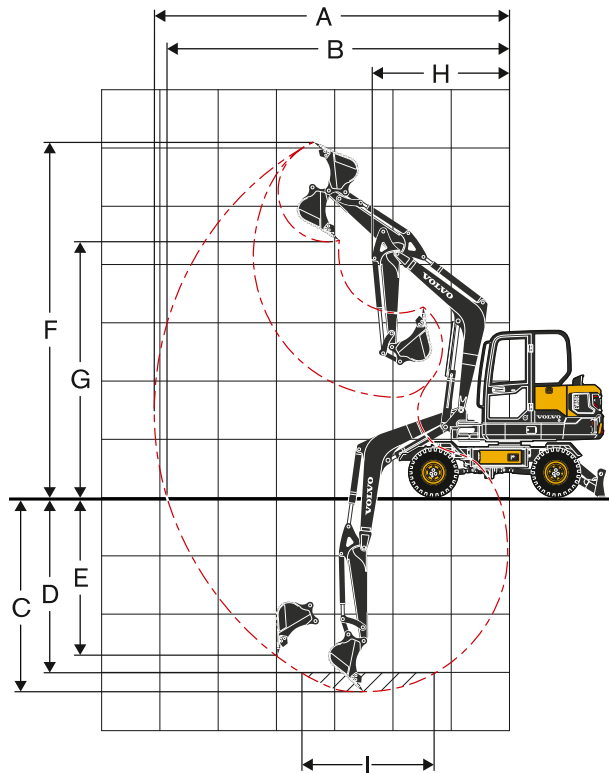
Boom \* Includes cylinder, piping and pin, excludes boom cylinder Pin

Arm \* Includes cylinder, linkage and pin



DIMENSIONS		Unit		Dozer blade	
A	Height	mm	ft in	465	1' 6"
	Width	mm	ft in	1 930	6' 4"
B	Lifting height	mm	ft in	440	1' 5"
C	Digging depth	mm	ft in	140	0' 6"

# Specifications



## WORKING RANGES

Description	Unit		m	ft in
	m	ft in		
<b>Boom</b>			<b>2.9</b>	<b>9' 6"</b>
<b>Arm</b>			<b>1.6</b>	<b>5' 3"</b>
A Max. digging reach	mm	ft in	6 024	19' 9"
B Max. digging reach on ground	mm	ft in	5 810	19' 1"
C Max. digging depth	mm	ft in	3 292	10' 10"
D Max. digging depth (l=2.44 m/8' 0" level)	mm	ft in	2 905	9' 6"
E Max. vertical wall digging depth	mm	ft in	2 368	7' 9"
F Max. cutting height	mm	ft in	6 007	19' 8"
G Max. dumping height	mm	ft in	4 443	14' 7"
H Min. front swing radius	mm	ft in	2 350	7' 9"

## DIGGING FORCES WITH DIRECT FIT BUCKET

Breakout force (bucket)	SAE J1179	kN	lbf	37.7	8,475
	ISO 6015	kN	lbf	43.3	9,734
Tearout force (arm)	SAE J1179	kN	lbf	28.2	6,340
	ISO 6015	kN	lbf	28.8	6,474
Rotation angle, bucket			°		196



**LIFTING CAPACITY EW60E**

Lifting capacity at the arm end without bucket.

For lifting capacity including bucket. Simply subtract actual weight of the direct fit bucket or the bucket with quick coupler from the following values.

	Lifting hook related to ground level	1.0 m / 3.3 ft		2.0 m / 6.6 ft		3.0 m / 9.0 ft		4.0 m / 13.2 ft		5.0 m / 16.5 ft		Max. reach			
		Along UC	Across UC	Along UC	Across UC	Along UC	Across UC	Along UC	Across UC	Along UC	Across UC	Along UC	Across UC	Max.	
Boom: 2.9 m / 9' 6" Arm: 1.6 m / 5' 3" GP Shoe: Wheel CWT: 350 kg / 772 lb Machine: Front direction Dozer blade: Down	5.0 m	kg	-	-	-	-	-	-	-	-	-	*1 520	1 470	3 449 mm	
	16.5 ft	lb	-	-	-	-	-	-	-	-	-	*3,351	3,241	11.3 ft	
	4.0 m	kg	-	-	-	-	-	-	*1 520	1 170	-	-	*1 270	980	4 421 mm
	13.2 ft	lb	-	-	-	-	-	-	*3,351	2,579	-	-	*2,800	2,161	14.5 ft
	3.0 m	kg	-	-	-	-	-	-	*1 610	1 150	-	-	*1 190	810	4 947 mm
	9.9 ft	lb	-	-	-	-	-	-	*3,549	2,535	-	-	*2,623	1,786	16.2 ft
	2.0 m	kg	-	-	-	-	*2 540	1 690	*1 840	1 100	*1 530	780	*1 200	740	5 190 mm
	6.6 ft	lb	-	-	-	-	*5,600	3,726	*4,057	2,425	*3,373	1,720	*2,646	1,631	17.0 ft
	1.0 m	kg	-	-	-	-	*3 030	1 580	*2 040	1 050	*1 570	770	*1 280	720	5 197 mm
	3.3 ft	lb	-	-	-	-	*6,680	3,483	*4,497	2,315	*3,461	1,698	*2,822	1,587	17.1 ft
	0.0 m	kg	-	-	*2 110	*2 110	*3 040	1 540	*2 070	1 030	-	-	*1 470	760	4 969 mm
	0 ft	lb	-	-	*4,652	*4,652	*6,702	3,395	*4,564	2,271	-	-	*3,241	1,676	16.3 ft
	-1.0 m	kg	*3 000	*3 000	*4 060	3 020	*2 650	1 540	*1 800	1 020	-	-	*1 420	890	4 464 mm
	3.3 ft	lb	*6,614	*6,614	*8,951	6,658	*5,842	3,395	*3,968	2,249	-	-	*3,131	1,962	14.6 ft
	-2.0 m	kg	-	-	*2 450	*2 450	*1 680	1 590	-	-	-	-	*1 180	*1 180	3 530 mm
-6.6 ft	lb	-	-	*5,401	*5,401	*3,704	3,505	-	-	-	-	*2,601	*2,601	11.6 ft	
Boom: 2.9 m / 9' 6" Arm: 1.6 m / 5' 3" GP Shoe: Wheel CWT: 350 kg / 772 lb Machine: Front direction Dozer blade: Up	5.0 m	kg	-	-	-	-	-	-	-	-	-	*1 520	1 380	3 449 mm	
	16.5 ft	lb	-	-	-	-	-	-	-	-	-	*3,351	3,042	11.3 ft	
	4.0 m	kg	-	-	-	-	-	-	*1 520	1 100	-	-	*1 270	920	4 421 mm
	13.2 ft	lb	-	-	-	-	-	-	*3,351	2,425	-	-	*2,800	2,028	14.5 ft
	3.0 m	kg	-	-	-	-	-	-	*1 610	1 080	-	-	*1 190	760	4 947 mm
	9.9 ft	lb	-	-	-	-	-	-	*3,549	2,381	-	-	*2,623	1,676	16.2 ft
	2.0 m	kg	-	-	-	-	*2 540	1 580	*1 840	1 030	1 410	740	*1 200	690	5 190 mm
	6.6 ft	lb	-	-	-	-	*5,600	3,483	*4,057	2,271	3,109	1,631	*2,646	1,521	17.0 ft
	1.0 m	kg	-	-	-	-	*3 030	1 480	1 950	990	1 390	720	*1 280	680	5 197 mm
	3.3 ft	lb	-	-	-	-	*6,680	3,263	4,299	2,183	3,064	1,587	*2,822	1,499	17.1 ft
	0.0 m	kg	-	-	*2 110	*2 110	*3 040	1 440	1 920	960	-	-	1 390	710	4 969 mm
	0 ft	lb	-	-	*4,652	*4,652	*6,702	3,175	4,233	2,116	-	-	3,064	1,565	16.3 ft
	-1.0 m	kg	*3 000	*3 000	*4 060	2 770	*2 650	1 440	*1 800	960	-	-	*1 420	830	4 464 mm
	3.3 ft	lb	*6,614	*6,614	*8,951	6,107	*5,842	3,175	*3,968	2,116	-	-	*3,131	1,830	14.6 ft
	-2.0 m	kg	-	-	*2 450	*2 450	*1 680	1 480	-	-	-	-	*1 180	1 180	3 530 mm
-6.6 ft	lb	-	-	*5,401	*5,401	*3,704	3,263	-	-	-	-	*2,601	2,601	11.6 ft	
Boom: 2.9 m / 9' 6" Arm: 1.6 m / 5' 3" GP Shoe: Wheel CWT: 350 kg / 772 lb Machine: Rear direction Dozer blade: Down	5.0 m	kg	-	-	-	-	-	-	-	-	-	*1 520	1 470	3 449 mm	
	16.5 ft	lb	-	-	-	-	-	-	-	-	-	*3,351	3,241	11.3 ft	
	4.0 m	kg	-	-	-	-	-	-	*1 520	1 170	-	-	*1 270	980	4 421 mm
	13.2 ft	lb	-	-	-	-	-	-	*3,351	2,579	-	-	*2,800	2,161	14.5 ft
	3.0 m	kg	-	-	-	-	-	-	*1 610	1 150	-	-	*1 190	810	4 947 mm
	9.9 ft	lb	-	-	-	-	-	-	*3,549	2,535	-	-	*2,623	1,786	16.2 ft
	2.0 m	kg	-	-	-	-	*2 540	1 690	*1 840	1 100	*1 530	780	*1 200	740	5 190 mm
	6.6 ft	lb	-	-	-	-	*5,600	3,726	*4,057	2,425	*3,373	1,720	*2,646	1,631	17.0 ft
	1.0 m	kg	-	-	-	-	*3 030	1 580	*2 040	1 050	*1 570	770	*1 280	720	5 197 mm
	3.3 ft	lb	-	-	-	-	*6,680	3,483	*4,497	2,315	*3,461	1,698	*2,822	1,587	17.1 ft
	0.0 m	kg	-	-	*2 110	*2 110	*3 040	1 540	*2 070	1 030	-	-	*1 470	760	4 969 mm
	0 ft	lb	-	-	*4,652	*4,652	*6,702	3,395	*4,564	2,271	-	-	*3,241	1,676	16.3 ft
	-1.0 m	kg	*3 000	*3 000	*4 060	3 020	*2 650	1 540	*1 800	1 020	-	-	*1 420	890	4 464 mm
	3.3 ft	lb	*6,614	*6,614	*8,951	6,658	*5,842	3,395	*3,968	2,249	-	-	*3,131	1,962	14.6 ft
	-2.0 m	kg	-	-	*2 450	*2 450	*1 680	1 590	-	-	-	-	*1 180	*1 180	3 530 mm
-6.6 ft	lb	-	-	*5,401	*5,401	*3,704	3,505	-	-	-	-	*2,601	*2,601	11.6 ft	
Boom: 2.9 m / 9' 6" Arm: 1.6 m / 5' 3" GP Shoe: Wheel CWT: 350 kg / 772 lb Machine: Rear direction Dozer blade: Up	5.0 m	kg	-	-	-	-	-	-	-	-	-	1 370	1 380	3 449 mm	
	16.5 ft	lb	-	-	-	-	-	-	-	-	-	3,020	3,042	11.3 ft	
	4.0 m	kg	-	-	-	-	-	-	1 100	1 100	-	-	920	920	4 421 mm
	13.2 ft	lb	-	-	-	-	-	-	2,425	2,425	-	-	2,028	2,028	14.5 ft
	3.0 m	kg	-	-	-	-	-	-	1 080	1 080	-	-	760	760	4 947 mm
	9.9 ft	lb	-	-	-	-	-	-	2,381	2,381	-	-	1,676	1,676	16.2 ft
	2.0 m	kg	-	-	-	-	1 570	1 580	1 030	1 030	740	740	690	690	5 190 mm
	6.6 ft	lb	-	-	-	-	3,461	3,483	2,271	2,271	1,631	1,631	1,521	1,521	17.0 ft
	1.0 m	kg	-	-	-	-	1 470	1 480	990	990	720	720	680	680	5 197 mm
	3.3 ft	lb	-	-	-	-	3,241	3,263	2,183	2,183	1,587	1,587	1,499	1,499	17.1 ft
	0.0 m	kg	-	-	*2 110	*2 110	1 430	1 440	960	960	-	-	720	710	4 969 mm
	0 ft	lb	-	-	*4,652	*4,652	3,153	3,175	2,116	2,116	-	-	1,587	1,565	16.3 ft
	-1.0 m	kg	*3 000	*3 000	2 740	2 770	1 430	1 440	960	960	-	-	830	830	4 464 mm
	3.3 ft	lb	*6,614	*6,614	6,041	6,107	3,153	3,175	2,116	2,116	-	-	1,830	1,830	14.6 ft
	-2.0 m	kg	-	-	*2 450	*2 450	1 470	1 480	-	-	-	-	1 180	1 180	3 530 mm
-6.6 ft	lb	-	-	*5,401	*5,401	3,241	3,263	-	-	-	-	2,601	2,601	11.6 ft	

Notes: 1. The above loads are in compliance with SAE J1097 and ISO 10567 Hydraulic Excavator Lifting Capacity Standards. 2. Rated loads do not exceed 87% of hydraulic lifting capacity or 75% of tipping load. 3. Rated loads marked with an asterisk (\*) are limited by hydraulic capacity rather than tipping load.

# Equipment

## STANDARD EQUIPMENT

### Engine

Low-emission Volvo T4 diesel engine  
 Standard cooling system  
 Two-stage air filter  
 Fuel filter and water separator  
 Alternator, 90 A

### Electric / Electronic control system

Safe engine start function  
 Automatic idling system  
 Engine auto shut down  
 Halogen working lights;  
 Cab-mounted 1 (Front), Boom-mounted 1 (LH)  
 Battery, 12 V / 100 Ah  
 Start motor, 12 V / 2.5 kW  
 Monitor and keypad  
 Master electrical disconnect switch  
 Electric dozer blade switch on joystick  
 Pattern change valve  
 Travel alarm

### Frame

Rearview mirror  
 350 kg (772 lb) counterweight  
 Under cover  
 Dozer blade

### Undercarriage

Tyre: 12.00-16.5 12PR

### Hydraulic system

Automatic two speed travel motors  
 Cylinder cushioning  
 Hydraulic fluid mineral 46  
 Travel motor 30 km/h (18.6 mi/h)  
 Hydraulic piping:  
 Breaker & shear (X1 Double Acting)

### Cab and Interior

Cab  
 Fabric operator seat with suspension  
 Seat belt, 3 inch retractable  
 Climate control with Air conditioning  
 Control joystick  
 Master key

### Digging equipment

Boom: 2.9 m (9' 6"), Arm: 1.6 m (5' 3")  
 Offset boom  
 Linkage

### Service

Tool kit-daily maintenance

## OPTIONAL EQUIPMENT

### Engine

Water separator (With heater)  
 Electric / Electronic control system  
 Fuel filler pump: 35 l/min (9.3 gal/min), with automatic shut-off  
 Halogen extra working lights;  
 Cab-mounted 1 (Rear)  
 Boom-mounted 1 (RH)  
 Caretrack  
 Rotating warning beacon  
 Rearview Camera  
 LED Light

### Hydraulic system

Hydraulic piping:  
 Breaker (X1 Single Acting)  
 Slope & rotator (X3)  
 Grapple  
 Quick coupler  
 Hose rupture valve for boom, arm  
 Overload warning device  
 Hydraulic oil, ISO VG 32, 68  
 Hydraulic oil, biodegradable 46  
 Hydraulic oil, longlife oil 32, 46, 68  
 Travel motor 20 km/h (12.4 mi/h)

### Cab and Interior

Fabric operator seat with suspension with heater  
 PVC operator seat with suspension  
 Seat belt, 2 inch retractable  
 Radio with MP3/AUX/Bluetooth  
 Mechanical hour meter  
 Cab mounted FOG (Falling Object Guard)  
 FOPS (Falling Object Protection Structure)  
 Sun screen, front/roof  
 Safety net

### Digging equipment

Fixed boom

### Service

Tool kit, full scale  
 Spare parts



---

**SELECTION OF VOLVO OPTIONAL EQUIPMENT**

---

**Electric dozer blade switch on joystick**



**Rear view camera**



**Auxiliary hydraulic piping (X3)**



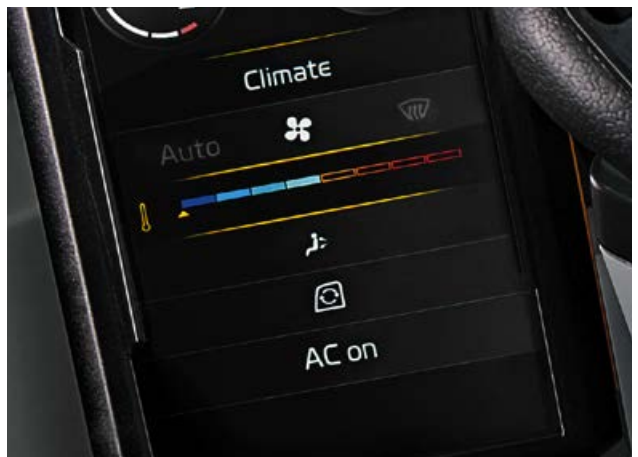
**LED Light**



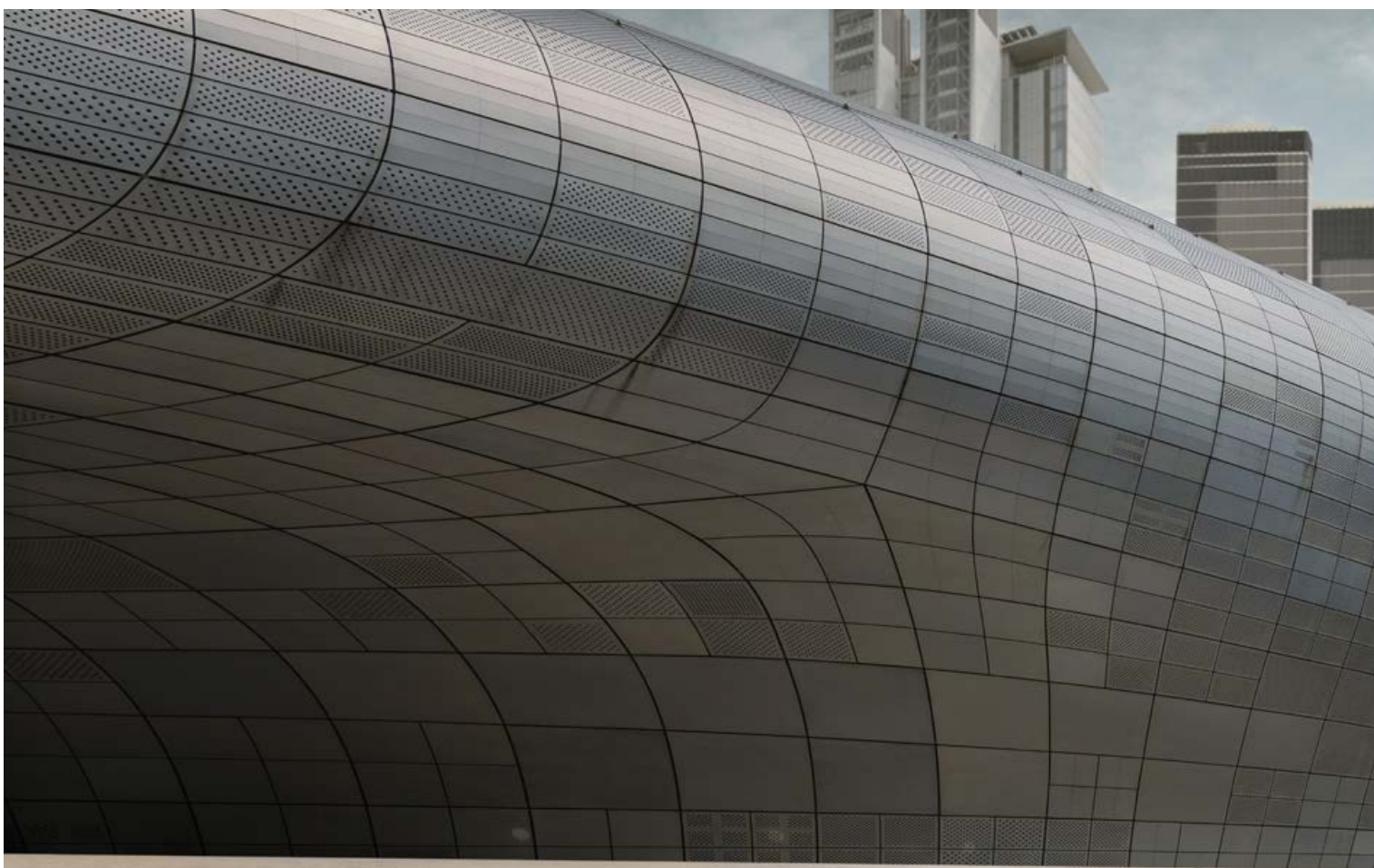
**Heated seat**



**Auto Air Conditioning**



Not all products are available in all markets. Under our policy of continuous improvement, we reserve the right to change specifications and design without prior notice. The illustrations do not necessarily show the standard version of the machine.



**VOLVO**

**Volvo Construction Equipment**

[www.volvoce.com](http://www.volvoce.com)